

Lessons

Tennis (May – August)

Junior Beginner

Monday and Wednesday 4:30 - 5:30

Adult Beginner

Monday 6:00 - 7:00

Adult Advanced

Tuesday 6:00 - 7:00

Badminton (October – April)

Junior Beginner

Monday and Wednesday 5:00 - 6:00

Junior Intermediate

Monday and Wednesday 6:00 - 7:00

Junior High Performance

Wednesday 7:00 - 8:22

Adult Beginner

Wednesday 7:30 - 8:30

Lessons are \$25 for members and \$60 for non-members. The lessons consist of six sessions each one hour in length and are facilitated by

*Non-members will have \$35 of their lessons fee credited to a membership should you choose to join Riverside.

Leagues

Tennis Doubles (May – September)

Monday “Cherry Insurance” Open

Tuesday “Volkswagen” High Performance

Thursday “The Trading Post” Mixed

**** All tennis leagues begin at 7:00 ****

Badminton (October – April)

Monday Ladies’ Doubles @ 7:30

Tuesday Men’s Doubles @ 7:45

Thursday Mixed Singles @ 7:45

Saturday Junior Doubles @ 11:00

Summer Badminton (May - September)

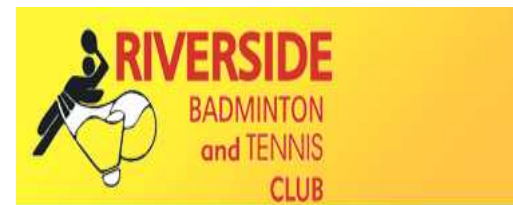
Wednesday Mixed Doubles @ 7:30

Discover The Riverside Badminton & Tennis Club

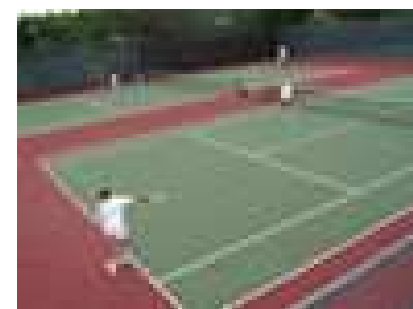
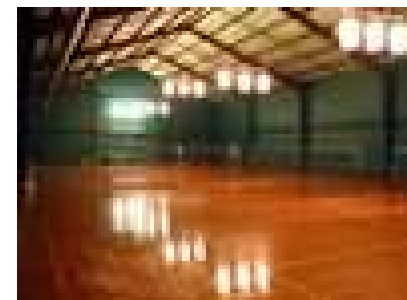
The Riverside Badminton & Tennis Club is a non-profit sports facility offering both competitive and recreational players a premier facility where they can both learn and play badminton and tennis.



Located along the beautiful South Saskatchewan River in Victoria Park, Riverside provides for you affordable entertainment and a safe family environment to enjoy sport and enhance your level of fitness.



Saskatchewan’s Premier Badminton & Tennis Facility



**645 Spadina Crescent West
Saskatoon, SK. S7M 1C1**

Phone: 242 5584 Fax: 242 5275

**Email
riverside@saskatoonriverside.com**

**Website
www.saskatoonriverside.com**

Being A Member

We pride ourselves in offering affordable memberships fees for which you will receive entrance in league play, unlimited court use along with discounts on Pro Shop items and lessons. Becoming a member of the Riverside Badminton & Tennis Club will open your door to fitness, a terrific facility and social events with people who are just like you.



Annual Membership Dues 2010-2011

	<u>Tennis</u>	<u>Badminton</u>	<u>Dual</u>
Junior	\$175	\$225	\$300
Student	\$250	\$325	\$425
Adult	\$350	\$475	\$575
Family	\$700	\$950	\$1150

**** Tennis 12 & under \$100

Fees include a voucher to use at the Canteen, Lounge or Pro Shop. Vouchers are valued at either \$25, \$50, \$100 or \$150 based on membership purchased.

Guest Day Pass

Adults \$15.00 / Students \$10.00

One fee to play all day Riverside Offers

- ❖ Nine outdoor tennis courts that are maintained in premier playing condition offering both night lighting and windscreens
- ❖ Six badminton courts with green background walls, soft lighting and a viewing area
- ❖ Modern change rooms, showers and lockers
- ❖ A Proshop with the latest clothes and equipment to play the game and look great.
- ❖ A canteen offering snacks, food and beverages plus a licensed lounge which includes a large deck overseeing the tennis courts
- ❖ Special rental rates for schools, community organizations or businesses.

Hours of Operation

Summer (May 1 - September 30)

Monday & Wednesday 10:30 am - 10:30 pm

Tuesday & Thursday 10:30 am – 11:00 pm

Friday 10:30 – 9:00

Saturday 10:00 am - 9:00 pm

Sunday 12:00 pm - 7:00 pm

Winter (October 1 - April 30)

Monday-Thursday 11:30 am - 10:30 pm

Friday 11:30 am - 9:00 pm

Saturday 10:00 am - 9:00 pm

Sunday 12:00 pm - 7:00 pm

Competitive Development

If you feel your skills are at a level ready to compete against others then the Riverside Badminton & Tennis Club offers you a fair level of competition in both badminton or tennis in singles, doubles, mixed doubles and juniors. These leagues are set up using a ladder system offering you the opportunity to compete with players at the same level you are. We also host tournaments in both sports and at all levels.



**The
Riverside Badminton & Tennis
Club**

**“Where friends and
families come to play”**